

There is no cure
For MS but it is
Not Terminal
There are Medicines
to help reduce the
symptoms



and there are
lots of people
to help



MS Nurse

Neurologist



**Physio and
Occupational
Therapists**



SWANSEA PEOPLE FIRST
is supported by:

bild



Llywodraeth Cynulliad Cymru
Welsh Assembly Government



SWANSEA PEOPLE FIRST
Peer Health Advocacy Project



GOOD HEALTH FOR ALL!

6 Bethany Lane
West Cross
Swansea
SA3 5TL

(01792) 405333

info@swanseapeoplefirst.co.uk
www.swanseapeoplefirst.co.uk

SWANSEA PEOPLE FIRST
Peer Health Advocacy Project



An Organisation of and for People with Learning Disabilities

GOOD HEALTH FOR ALL!



**What is
Multiple
Sclerosis
(MS)?**

An Information Leaflet

What is MS?



MS is a condition that affects a person's **Nervous System**



Your **Nervous System** controls all your body's actions by sending

Messages

to and from the brain like **Telephone Wires**

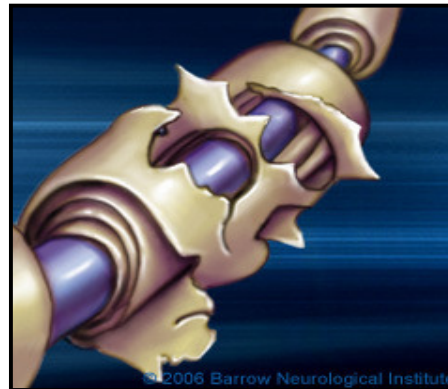


What is MS?



These '**Wires**' are protected by a covering called

Myelin



When someone has MS this covering becomes **damaged** or

Scarred

and stops the messages from **getting through** properly

What are the symptoms of MS?

A Person with MS may have:

Blurred Vision 



Pins and Needles

Nerve and Muscle Pain 



Depression

Dizziness and Tiredness 



Difficulty Moving

Problems going to the Toilet 

